

Map 9 GIPPSLAND

Comprehensive Regional Assessment

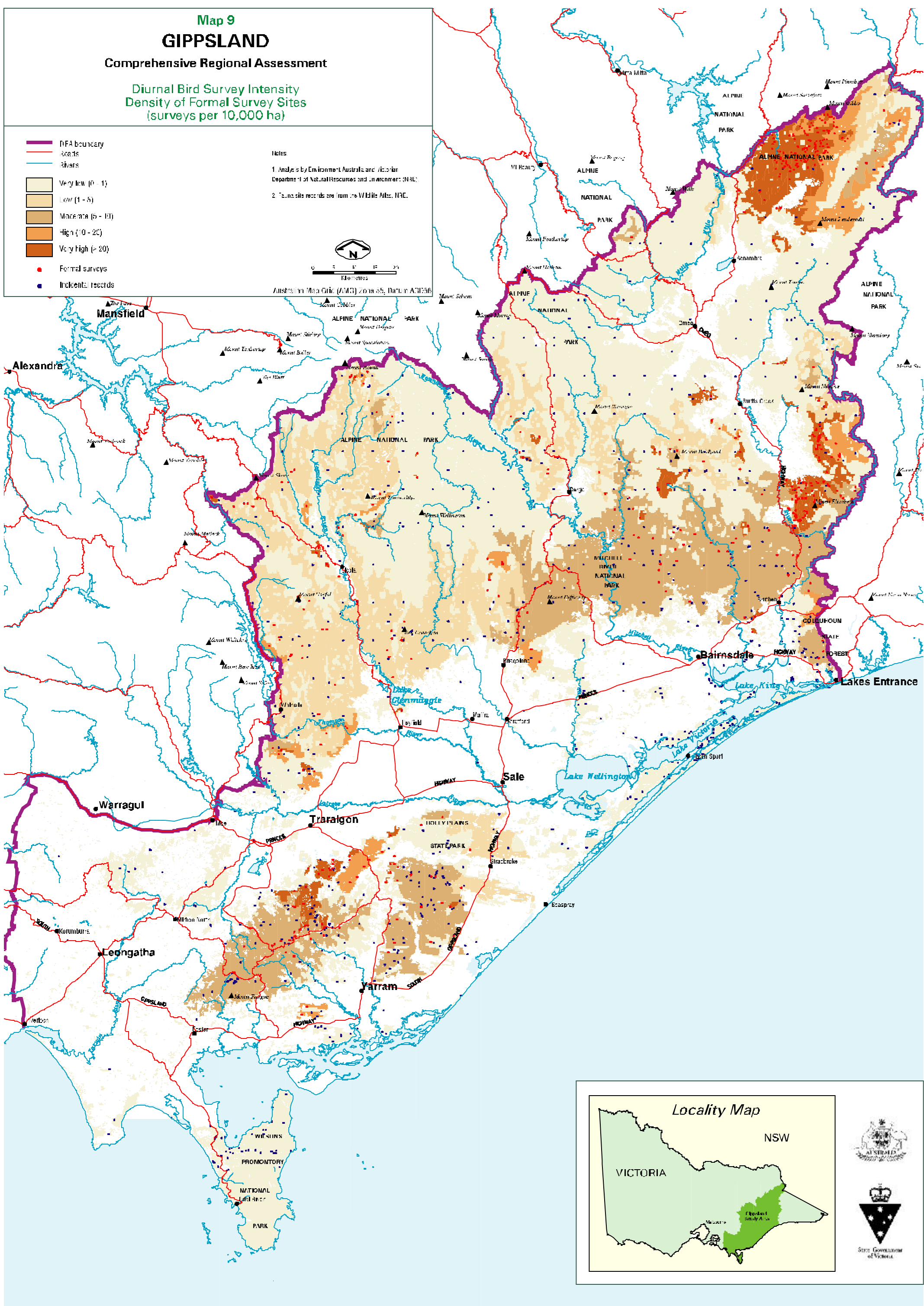
Diurnal Bird Survey Intensity
Density of Formal Survey Sites
(surveys per 10,000 ha)

-  DFA boundary
-  Roads
-  Rivers
-  Very low (0 - 1)
-  Low (1 - 5)
-  Moderate (5 - 10)
-  High (10 - 20)
-  Very High (> 20)
-  Formal surveys
-  Incidental records

Notes
1. Analysis by Environment Australia and Victorian Department of Natural Resources and Environment (DNRE).
2. Taxonomic records are from the Wildlife Atlas, NRE.



Australian Mean Grid (AMG) 2018 55, Datum AD6356



Locality Map

NSW

VICTORIA

Gippsland Study Area

STATE GOVERNMENT OF VICTORIA