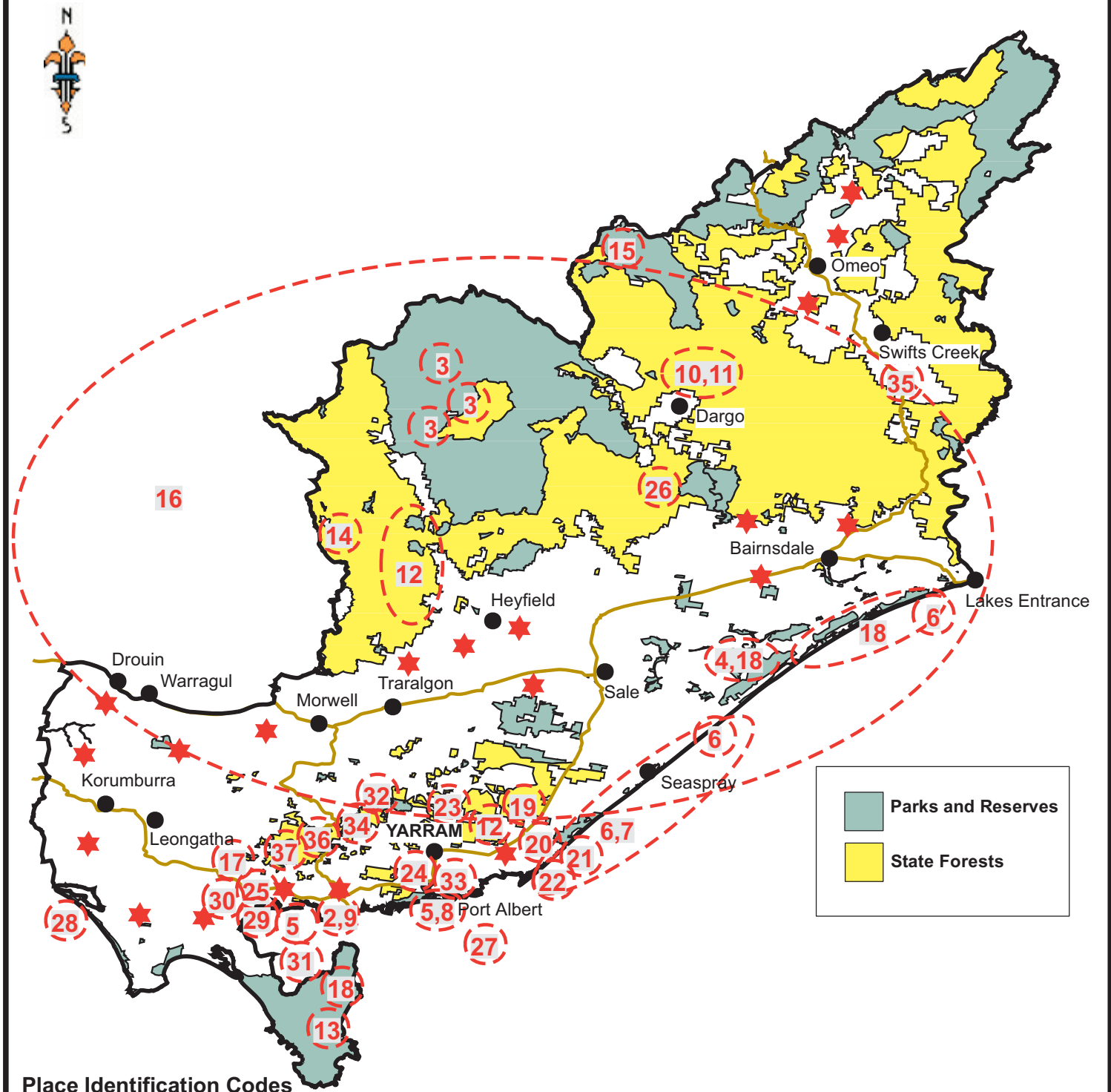


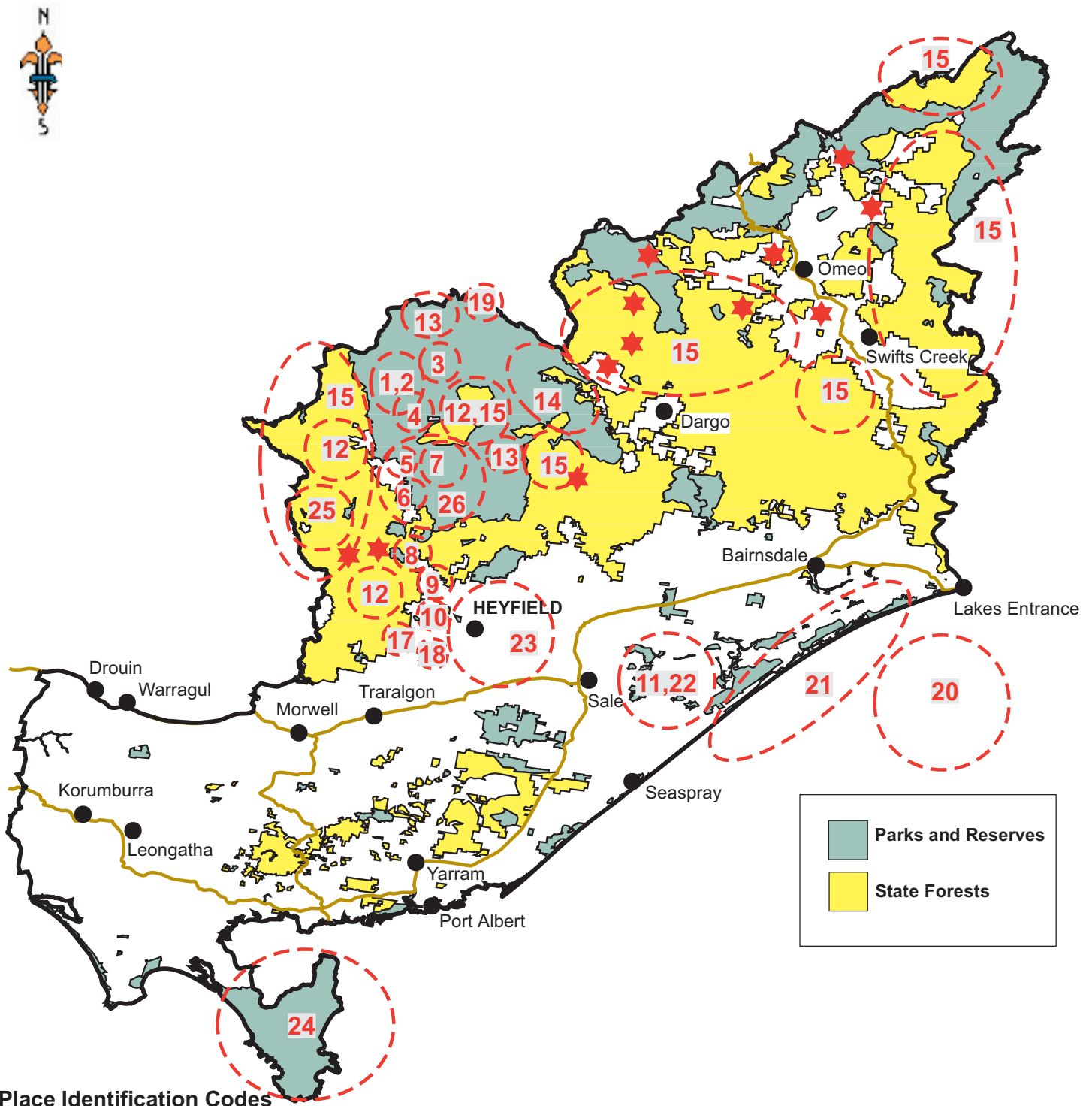
Figure 6.1 Representations of place: Yarram



Place Identification Codes

- | | | | |
|-------------------------------------|---|---|-------------------------------------|
| 1 Dairy, beef, wool, horticulture ★ | 18 Tourism | 30 Upper Franklin River tin mine water race | 37 Vision for a large National park |
| 2 Cattle droving | 19 Proposed Radcon selective harvesting operation | 31 Nooramunga Coastal Reserve | |
| 3 Camping | 20 White Woman's waterhole | 32 Hiawatha Falls - walking track and picnic spot | |
| 4 Boating | 21 Much used picnic spot and BBQ | 33 Refuse tip | |
| 5 Commercial fishing | 22 Jack Smith Lake | 34 Concern for native forest management - South Grand Ridge Road | |
| 6 Recreational fishing | 23 Aboriginal cultural site | 35 Need to look at revegetation opportunity | |
| 7 Surf fishing | 24 Tarra-Bulga National Park | 36 Native Forest areas are important for: tourism, biodiversity, water and catchments heritage, Mountain Ash range, cool-temperate rain forest, landscape quality | |
| 8 Port and coastal walks | 25 Greenmount cemetery | | |
| 9 Horse riding | 26 Gunyah-Gunyah Rainforest Reserve | | |
| 10 Walnuts | 27 Den of Nargun (Bartaluk Cultural Trail) | | |
| 11 Wild dogs in the region | 28 Port Albert - historical town reserve | | |
| 12 Bees | 29 Old Bunurong Coastal reserve | | |
| 13 Year 7 camps | 30 Turton's Creek Reserve | | |
| 14 Year 9 camps | | | |
| 15 Year 11-12 camps | | | |
| 16 Timber harvesting | | | |
| 17 Heritage trail | | | |

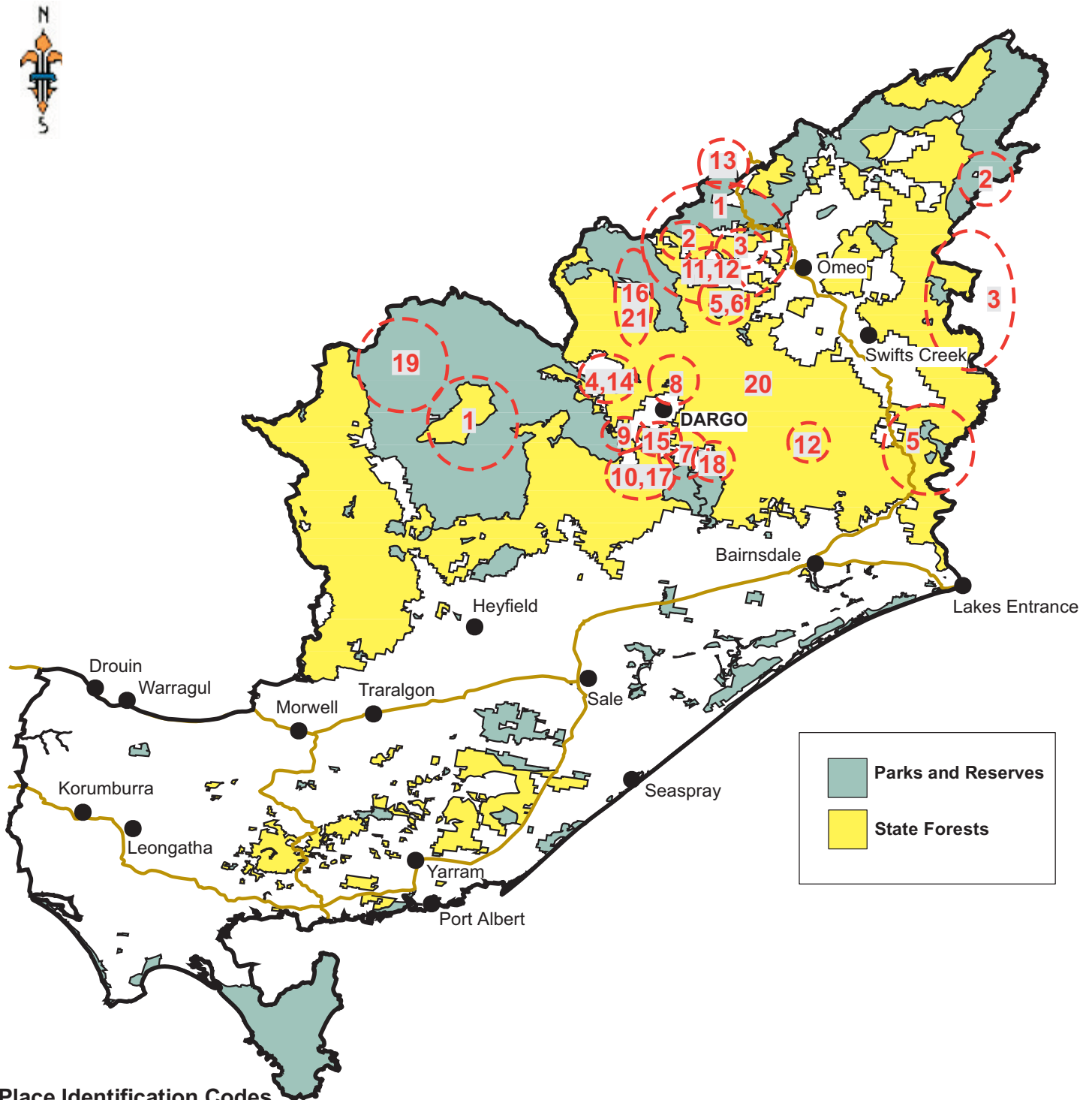
Figure 6.2 Representations of place: Heyfield



Place Identification Codes

1 Nordic skiing	10 Lake Glenmaggie - fishing boating	18 Cowwar Weir	24 Wilsons Promontory has limited access for apiculture
2 Cattle grazing in Alpine Park and State forests	11 Duck hunting	19 Wonnangatta Station	25 Baw Baw National Park has no access for apiculture
3 Snowy Range Airstrip	12 Deer hunting (through winter)	20 Oil rigs/oil industry	26 Limited bee access throughout region
4 St Pauls Marist Brothers Camp	13 Bush walking	21 Ninety Mile Beach - longest stretch of sand in the world 90 mile beach marathon, fishing, surfing, boating	★ Fossicking
5 Melbourne Grammar Camp	14 4WD recreation into Wonnangatta through Dargo Mansfield and Heyfield	22 Wetlands Sale common - Interpretation Centre	
6 Traralgon School Camp	15 High value ash resource	23 Salinity problems in Macalister Irrigation District	
7 Wellington River Camping	16 Very important timber production (various areas)		
8 Wollongara Camp	17 Aquaculture industries		
9 Peninsula School Camp			

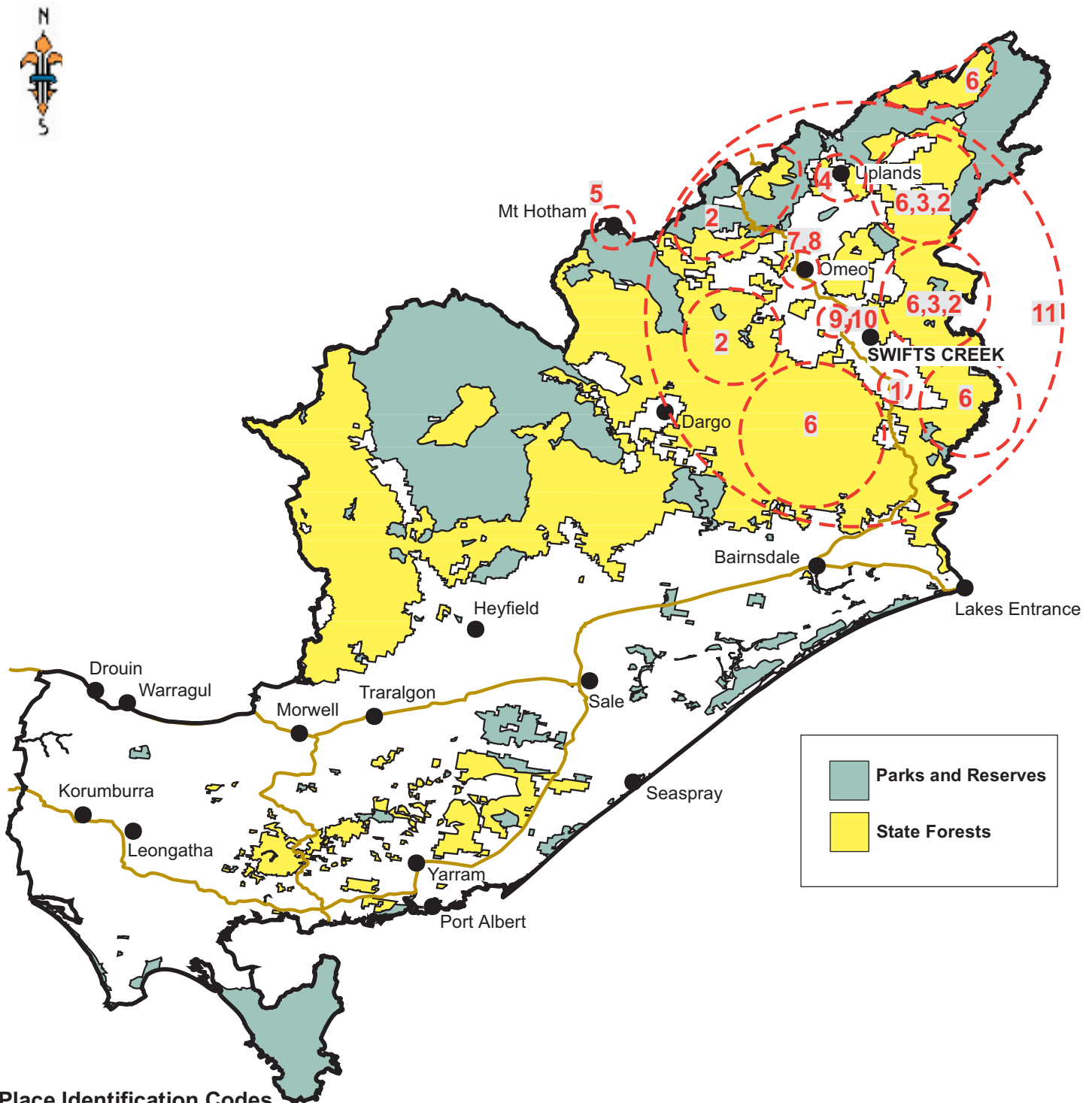
Figure 6.3 Representations of place: Dargo



Place Identification Codes

- | | | |
|---------------------------|---|--|
| 1 Mountain cattle grazing | 10 Rafting, fishing, camping | 18 Dam site |
| 2 Logging area | 11 Horse riding | 19 Caledonia fires |
| 3 Timber production | 12 4x4 bikes | 20 Burning for fuel reduction needed in all forest areas |
| 4 Children's camp | 13 Snow fields | 21 Need for a High Plains Road with all year access |
| 5 Four wheel drive | 14 Historic gold mining | |
| 6 Deer hunting | 15 Tabberabbera | |
| 7 Camping (on all rivers) | 16 Dargo and Mount Hotham Road | |
| 8 Gold prospecting | 17 Wonnangatta Mitchell and Dargo River - very important for rafting and canoeing | |
| 9 Farming | | |

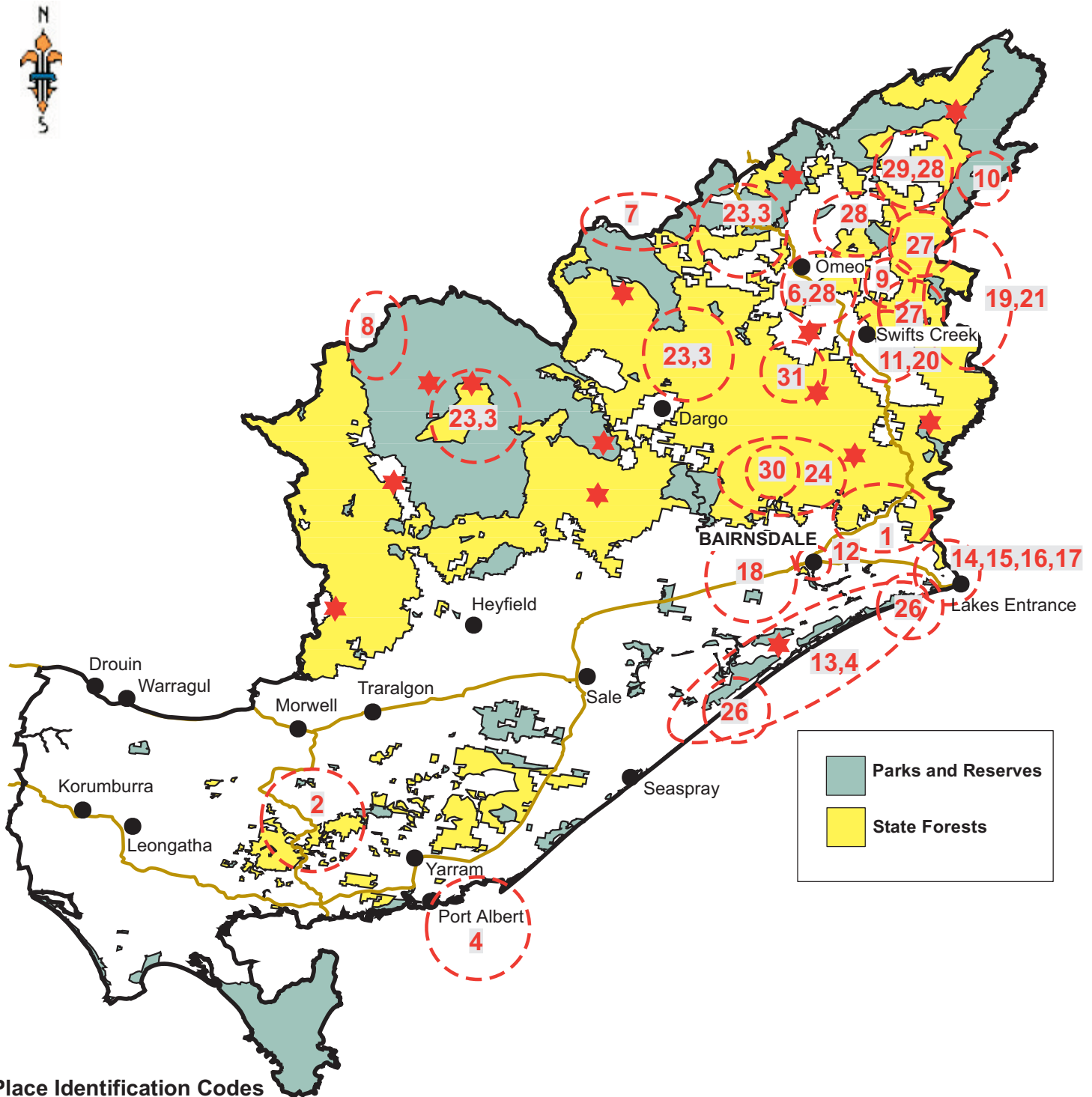
Figure 6.4 Representations of place: Swifts Creek



Place Identification Codes

- | | |
|--|---|
| 1 Local football and netball competition | 7 Oriental Claims (historic site) |
| 2 Cattle grazing on State Forest | 8 Omeo swimming pool |
| 3 Alpine grazing | 9 Mt Markery Winery (Cassilis) |
| 4 Swing bridge and Tablelands picnic area | 10 Cassilis historic gold fields |
| 5 Local ski excursion for both primary and secondary schools | 11 Areas on a fuel reduction burn plan. This should include all State Forest and National Parks |
| 6 Swifts Creek log resource area | |

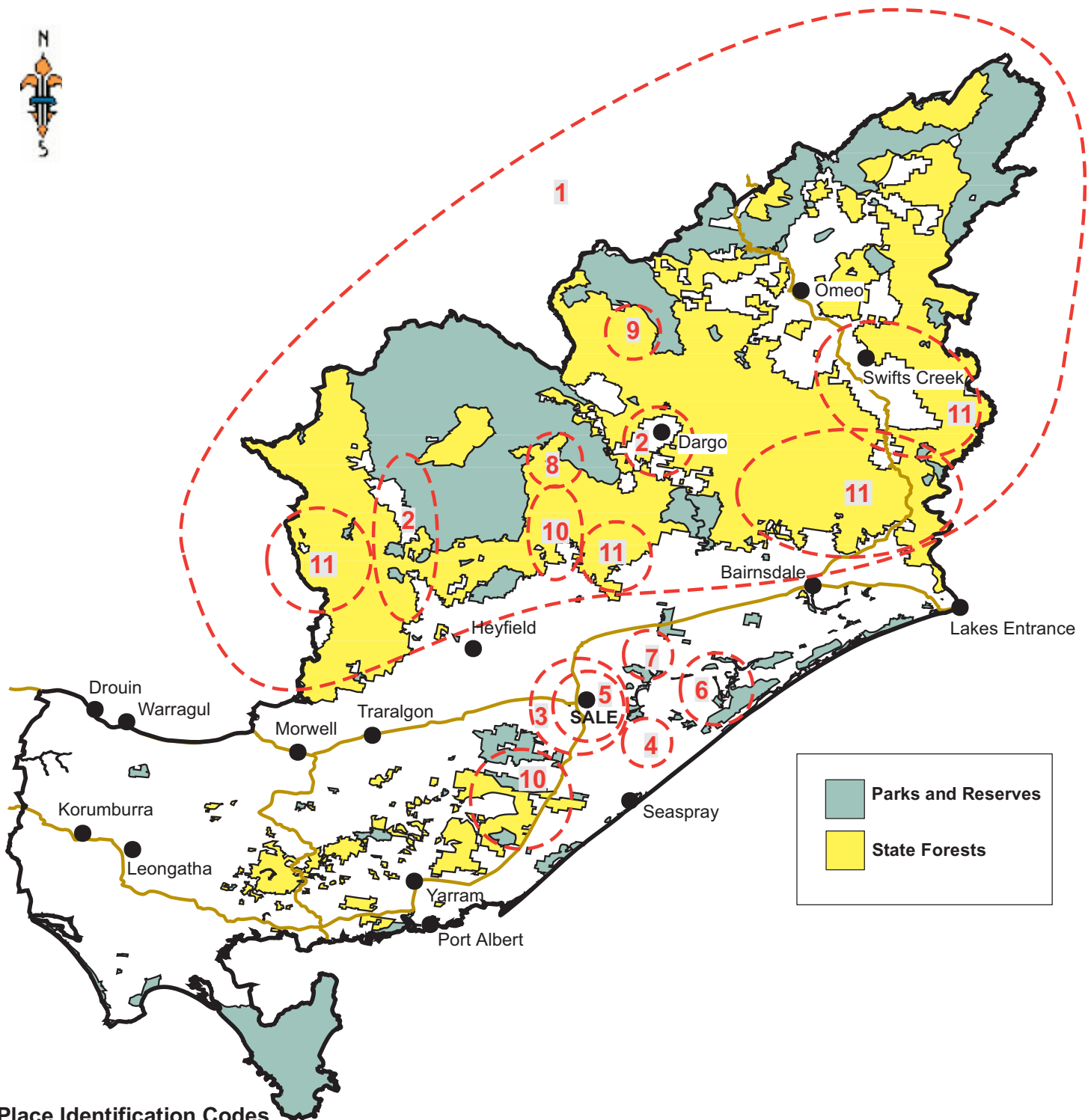
Figure 6.5 Representations of place: Bairnsdale



Place Identification Codes

1 Major apiarists zone (all areas)	10 Mine closed	17 Bat cave	25 Funding that is directed for East Gippsland gets to East Gippsland and not to Sale
2 A.P.P. Plantations	11 Timber laminating plant - further value adding	18 Significant Red Gum Plains	26 3-400 Bee sites at \$80 rental per annum
3 Fishing and deer hunting	12 Art gallery - Recreation centre	19 Mitchell & Tambo Rivers	27 Provide lower cost for communication - Infotech
4 Coastal fishing	13 Ninety mile beach - tourist and lifestyle attraction	20 Sawmill - 20 direct jobs, \$20 million investment	28 More support for isolated communities
5 Best 4WD country ★	14 Forest Tech - the Living Resources Centre	21 Erosion at the top of Nicholson	29 Highest value added timber (all areas)
6 School camp	15 Burrowing frog	22 Forest areas provide low cost youth recreational activities (all areas)	30 Rainforest threatened species
7 Recreational skiing	16 Lakes Entrance North Area/Catchment - Mississippi Creek	23 Some areas should be locked up and left pristine	31 Expensive woodchips - clear felling
8 Alpine Walking track			
9. Significant area			

Figure 6.6 Representations of place: Sale



Place Identification Codes

- | | |
|---|---|
| 1 Opportunistic bee foraging occurs virtually all over the RFA region but only mature trees yield honey | 7 Revegetate corridors of habitat |
| 2 Bees grazing on yellow box, red Stringybark and snow gum bees | 8 Realign top end of Marathon Road to 2WD standard to create a round trip for tourists (about 10km) |
| 3 Tree corridors needed along Princess Highway | 9 Upgrade Dargo High Plains Road |
| 4 Pipe part of sewer | 10 No further destruction of native vegetation |
| 5 Consider billabong vegetation | 11 No more restriction on access to National Parks |
| 6 Widen canal, develop Port, develop wetlands | |