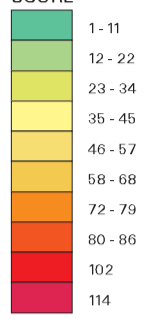


Map 10.4 GIPPSLAND

Comprehensive Regional Assessment

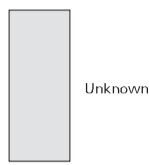
CUMULATIVE MINERAL POTENTIAL

CUMULATIVE SCORE

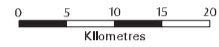


STANDARD SCORE

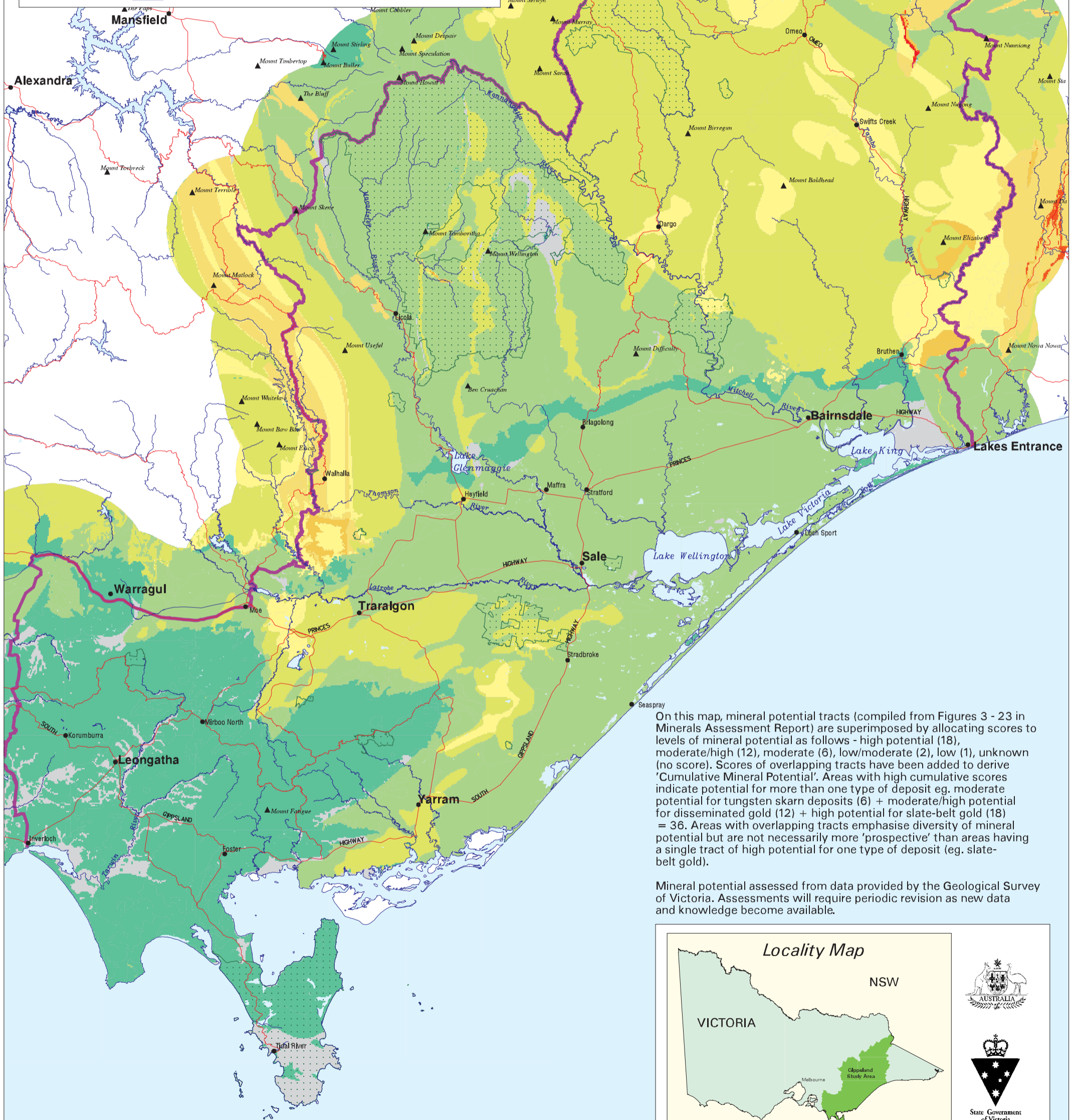
1	Low
2	Low to Moderate
6	Moderate
12	Moderate to High
18	High



- National and State Park, Wilderness and Reference Areas (based on land tenure coverage provided by Natural Resources and Environment Victoria in March 1999)
- RFA boundary
- Roads
- Rivers
- Water bodies



Australian Map Grid (AMG3) Zone 55, Datum AGD66



On this map, mineral potential tracts (compiled from Figures 3 - 23 in Minerals Assessment Report) are superimposed by allocating scores to levels of mineral potential as follows - high potential (18), moderate/high (12), moderate (6), low/moderate (2), low (1), unknown (no score). Scores of overlapping tracts have been added to derive 'Cumulative Mineral Potential'. Areas with high cumulative scores indicate potential for more than one type of deposit eg. moderate potential for tungsten skarn deposits (6) + moderate/high potential for disseminated gold (12) + high potential for slate-belt gold (18) = 36. Areas with overlapping tracts emphasise diversity of mineral potential but are not necessarily more 'prospective' than areas having a single tract of high potential for one type of deposit (eg. slate-belt gold).

Mineral potential assessed from data provided by the Geological Survey of Victoria. Assessments will require periodic revision as new data and knowledge become available.

