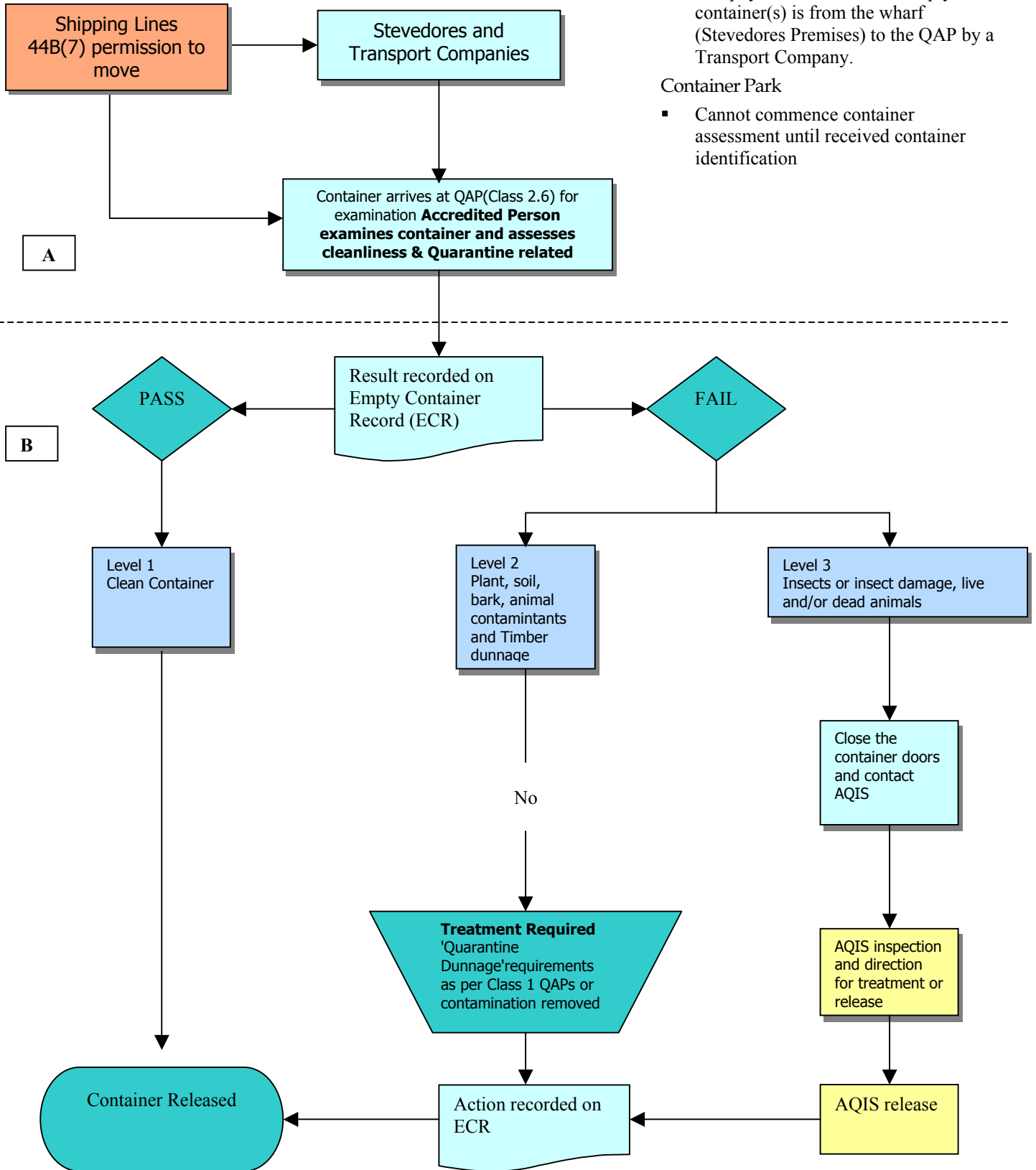


# EMPTY CONTAINER SCHEME FLOWCHART

Flow of information and container movement



Notes: Shipping Company

1. Forwards information on container numbers, date etc to Stevedore, Transport Company and QAP
2. The physical movement of empty container(s) is from the wharf (Stevedores Premises) to the QAP by a Transport Company.

Container Park

- Cannot commence container assessment until received container identification

A

B

Key

Decision by Other Party

Assessment category

Action by Other Party

Action by AQIS

NOTES: Tracking System

C: An alternative tracking system will need to be implemented if A (the commercial option) proves unviable.

B: Container Park operations