



Reporting and action plan

How to report suspicion of disease

Fisheries and aquaculture industry managers, including farmers and their staff, should be aware of their responsibility under the establishment's licence or permit conditions to report suspicion of diseases on Australia's National List of Reportable Diseases of Aquatic Animals to local authorities as soon as possible.

In the possible event of a disease incursion, fishery and aquaculture industry managers should develop an emergency management plan in consultation with farmers and appropriate extension staff.

If you identify signs of disease in a culture system, contact your aquatic animal health officer. If your observation is of wild aquatic animals, contact a wildlife or fisheries officer. Figure 2 shows the process, and the Whom to contact page gives contact details.

Follow the directions and advice provided by the officer you contact. This guide will help you find the information the officer needs.

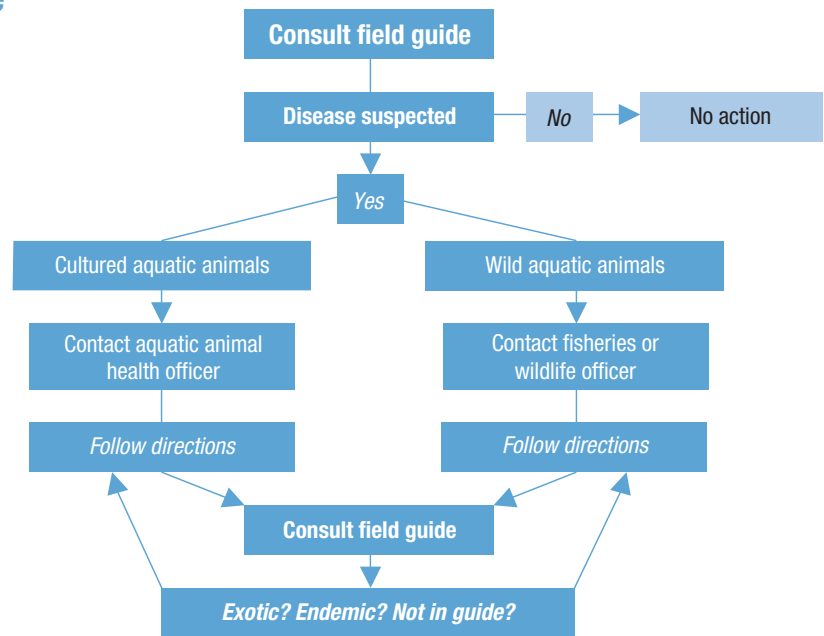


Figure 2. What to do if you suspect a disease.

Sourced from AGDAFF (2008) *Aquatic Animal Diseases Significant to Australia: Identification Field Guide*. Australian Government Department of Agriculture, Fisheries and Forestry, Canberra.

© Commonwealth of Australia 2008

This work is copyright. It may be reproduced in whole or in part subject to the inclusion of an acknowledgment of the source and no commercial usage or sale.