

Quarantine at Australia's international airports and seaports

The age of travel

Journeys past and present

When the Second Fleet sailed to Australia from England, one in four of the convicts and crew on board died before they got here. Only 750 landed at Sydney Cove, many helplessly ill. The trip took about 250 days.

Today a flight from England to Australia takes about 24 hours, and travel time from Asia and America is much less. Apart from jetlag, we expect to arrive safe and well.

We live in an age of travel and a country of travellers.

Australians love to travel overseas. We also get millions of overseas tourists visiting each year. This means a huge task for Quarantine.



More than 8 million travellers land in Australia each year; each traveller's luggage is screened for items that could bring in pests or disease.

Quarantine and travellers

Here are just some of the quarantine tasks that happen at international passenger terminals around Australia each day:

- incoming luggage x-rayed to check for quarantine risk items;
- interview passengers;
- detector dogs sniff luggage from high-risk flights and passenger ships;
- on-the-spot fines issued to passengers who don't declare risk items;
- check and clear arriving aircraft and cruise ships;
- set traps for insects such as mosquitoes, which could carry diseases like yellow fever and malaria; and
- dispose of all quarantine waste.



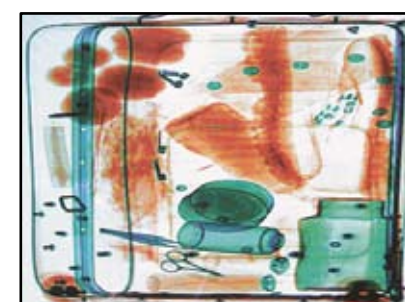
Cruise ships bring about 100,000 passengers to Australia each year, and all their luggage must be screened for any materials harbouring exotic pests or diseases.

Believe it or not...

Quarantine finds some unusual items in luggage. Here are some of them:

- teacups made from llama feet;
- baby pythons hidden in passenger's trousers;
- mangoes hidden under a woman's armpits;
- medicines made from wasps, bees, scorpions and spiders;
- elephant poo;
- live giant African snails; and
- 19 parrots packed in a suitcase.

Any items that pose a potential risk to Australia's plants, animals or people need to be inspected and possibly treated to make them safe – or destroyed if the risk is too high.



This is what a Quarantine inspector sees when they x-ray your bag at the airport. All items showing up as brown/orange are organic and must therefore be checked for pest and disease risks.



Quarantine officers use x-ray machines to screen for potential risk items in people's luggage. They are looking for any materials made from plants or animals.

Activities

Plan an overseas trip. Include in your plan: your travel itinerary; a list of key attractions you want to visit; items to pack; any vaccinations you will need for the places you're visiting; home chores to delegate during your absence (such as pets and wmail); and a list of things you want to buy overseas. Check the quarantine rules for each item on your shopping list: what goods will you have to declare at the airport when you get home to Australia? Are there any goods on your list that are strictly not allowed back into Australia?

Which should you declare? Imagine you're flying home to Australia after an overseas holiday, and the items below are all in your luggage. Which of these items will you need to declare at the airport when you get home? Fill them in on the Incoming Passenger Card.



A.



B.



C.



D.



Some people try to sneak live animals into Australia inside clothes or luggage. As well as endangering the animals, this could introduce diseases that could hurt our wildlife, farm animals and pets.

Wordwise

Organic material is any material that is alive. Quarantine inspectors need to check all organic materials that come into Australia – as well as any items that could harbour organic material (for example wooden artefacts that insects like to eat and live in). A grass skirt, a book covered with banana leaf, a woollen floor rug, a drum covered with raw animal hide, and any sort of food (both raw and processed) are all examples of organic material. Examples of **non-organic** material include most manufactured goods (other than food), including electronics, goods made from metal or plastic, most clothing and most paper goods.



Cruise passengers keep quarantine inspectors busy. Their luggage often contains a large amount of organic material, including woven grass hats, skirts and bags; drums covered in raw (unprocessed) animal skin; and jewellery made from plant seeds.

Incoming passenger card • Australia	
PLEASE COMPLETE IN ENGLISH WITH A BLUE OR BLACK PEN	
▶ Family/surname	
▶ Given names	
▶ Passport number	
◆ Flight number or name of ship	
▶ Intended address in Australia	
	State
▶ Do you intend to live in Australia for the next 12 months?	Yes <input type="checkbox"/> No <input type="checkbox"/>
▶ If you are NOT an Australian citizen:	
Do you suffer from tuberculosis?	Yes <input type="checkbox"/> No <input type="checkbox"/>
Do you have any criminal conviction/s?	Yes <input type="checkbox"/> No <input type="checkbox"/>
DECLARATION The information I have given is true, correct and complete. I understand failure to answer any questions may have serious consequences.	
YOUR SIGNATURE _____	
YOU MUST ANSWER EVERY QUESTION – IF UNSURE, X Yes	
▶ Are you bringing into Australia:	
1. Goods that may be prohibited or subject to restrictions, such as medicines, steroids, firearms, weapons of any kind or illicit drugs?	Yes <input type="checkbox"/> No <input type="checkbox"/>
2. More than 1125ml of alcohol or 250 cigarettes or 250g of tobacco products?	Yes <input type="checkbox"/> No <input type="checkbox"/>
3. Goods obtained overseas or purchased duty and/or tax free in Australia with a combined total price of more than AUD\$400, including gifts?	Yes <input type="checkbox"/> No <input type="checkbox"/>
4. Goods/samples for business/commercial use?	Yes <input type="checkbox"/> No <input type="checkbox"/>
5. AUD\$10,000 or more in Australian or foreign currency equivalent?	Yes <input type="checkbox"/> No <input type="checkbox"/>
6. Any food - includes dried, fresh, preserved, cooked, uncooked?	Yes <input type="checkbox"/> No <input type="checkbox"/>
7. Wooden articles, plants, parts of plants, traditional medicines or herbs, seeds, bulbs, straw, nuts?	Yes <input type="checkbox"/> No <input type="checkbox"/>
8. Animals, parts of animals and animal products including equipment, eggs, biologicals, specimens, birds, fish, insects, shells, bee products, pet food?	Yes <input type="checkbox"/> No <input type="checkbox"/>
9. Soil or articles with soil attached, ie. sporting equipment, shoes, etc?	Yes <input type="checkbox"/> No <input type="checkbox"/>
▶ 10. Have you visited a rural area or been in contact with, or near, farm animals outside Australia in the past 30 days?	Yes <input type="checkbox"/> No <input type="checkbox"/>
▶ 11. Have you been in Africa or South America in the last 6 days?	Yes <input type="checkbox"/> No <input type="checkbox"/>
Day _____ Month _____ Year _____	
TURN OVER THE CARD English	

Who am I?

I flew to Australia on a Boeing jet.
 I was one of more than 100 million arriving here last year – mostly from the United Kingdom, United States, New Zealand, Germany, France, Japan, Hong Kong and China.
 Despite our diverse origins, most of us look the same: thin, white, no distinguishing traits. If you saw a group of us, you'd be hard pressed to tell one from the next.
 Most wound up safely in the hands of waiting people. But I never made it. Instead, I was sent home covered in paw prints ... because I smelled funny.
 Who am I?
 Turn to page 7 for the answer ...